



| SVOY

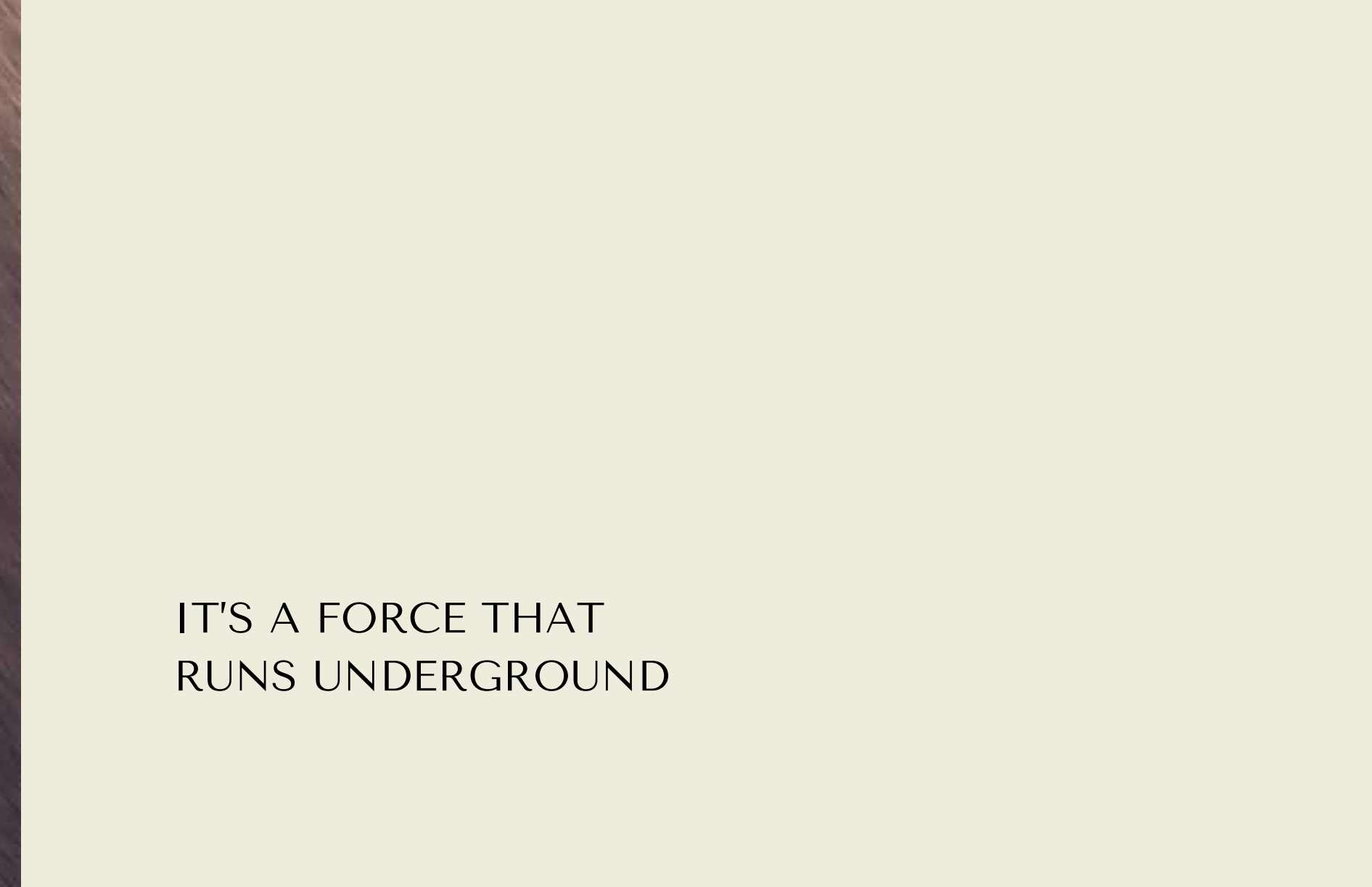


DESIGN INSPIRED BY AUTOMOBILI  
LAMBORGHINI





YOU CAN FEEL IT  
UNDER YOUR FEET



IT'S A FORCE THAT  
RUNS UNDERGROUND

Disclaimer: All pictures, plans, layouts, information, data and details included in this brochure are indicative only and may change at any time up to the final 'as built' status in accordance with final designs of the project, regulatory approvals and planning permissions. All accessories and interior finishes such as wallpaper, chandeliers, furniture, electronics, white goods, curtains, hard and soft landscaping, pavements, features, gym, and other elements displayed in the brochure, or between the plot boundary, are not part of the unit and are shown for illustrative purposes only.







## MAGNETIC ATTRACTION



| SVOY

A powerful territory and an icon of energy. When they come together, the supernatural happens. The land shakes, the land becomes alive. Tierra Viva Benahavís — Costa Del Sol, is an exclusive residential community of luxury villas, with design inspired by Automobili Lamborghini.

An architectural prodigy brought to life by DarGlobal, debuting for the first time in Spain.





## THE MYTH

Founded in 1963, Automobili Lamborghini is the epitome of luxury super sports cars made of innovative technology and futuristic lines. An Italian excellence that is still based in Sant'Agata Bolognese where it all started.

The true essence of Lamborghini DNA is represented in this futuristic and elegant architectural project complemented with interiors inspired by the super sports car design, thanks to incomparable craftsmanship and passion.



| SVOY







| SVOY

## COSTA DEL SOL

Exclusive yet relaxed.  
Fashionable yet characteristic.  
Connected yet nested.  
Costa Del Sol has it all.

Costa del Sol offers a gentle mild climate all year long, with proximity to all the main destinations in Spain and Europe thanks to high-speed trains and an international airport nearby.







SVOY



Vibrant and attractive,  
Costa Del Sol hosts tons of  
stylish clubs, restaurants and  
hotels, as well as shopping  
areas, exclusive marinas and  
breathtaking beaches.







| SVOY

## BENAHAVÍS

Benahavís ranks as one of the wealthiest municipalities in Spain thanks to the luxurious golf clubs and resorts that surround the area. In recent years, it has emerged as one of the most desirable locations on Costa del Sol to buy property, in a natural haven of peace and beauty within easy reach of Marbella.





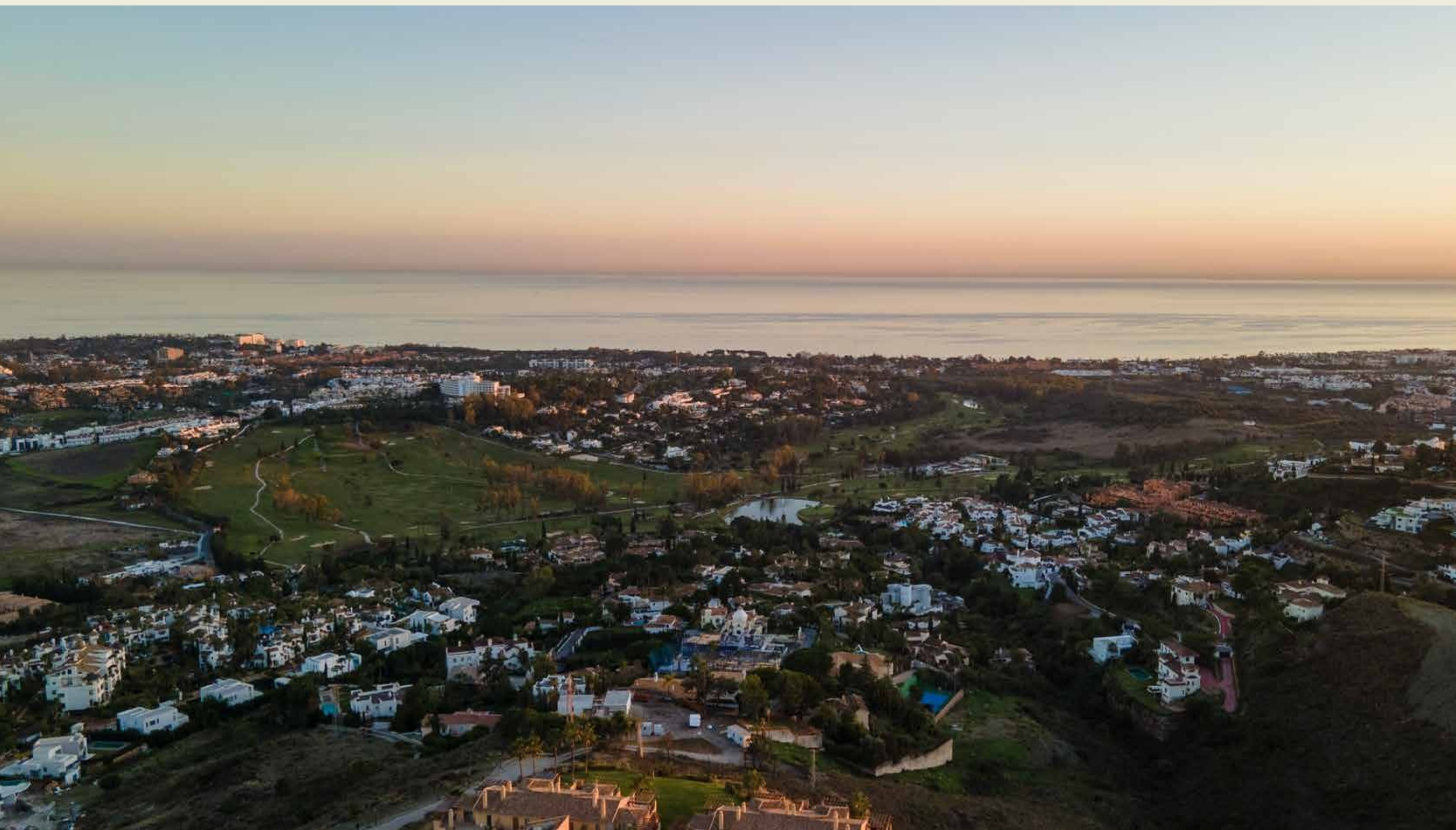


| SVOY

## GENIUS LOCI

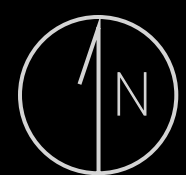
The Ancient Romans believed some places had divine qualities, Tierra Viva is one of them. Nestled on divine hills outside Los Jaralillos, in the exclusive area of Benahavís, the property is located just 8 minutes away from Marbella and 5 minutes from the shores.

With 12 golf clubs, charming Andalusian villages and the stylish Puerto Banús in the surroundings, Tierra Viva offers a peaceful retreat in the middle of a vibrant community.



The Mediterranean Sea and Costa Del Sol as seen from Villas

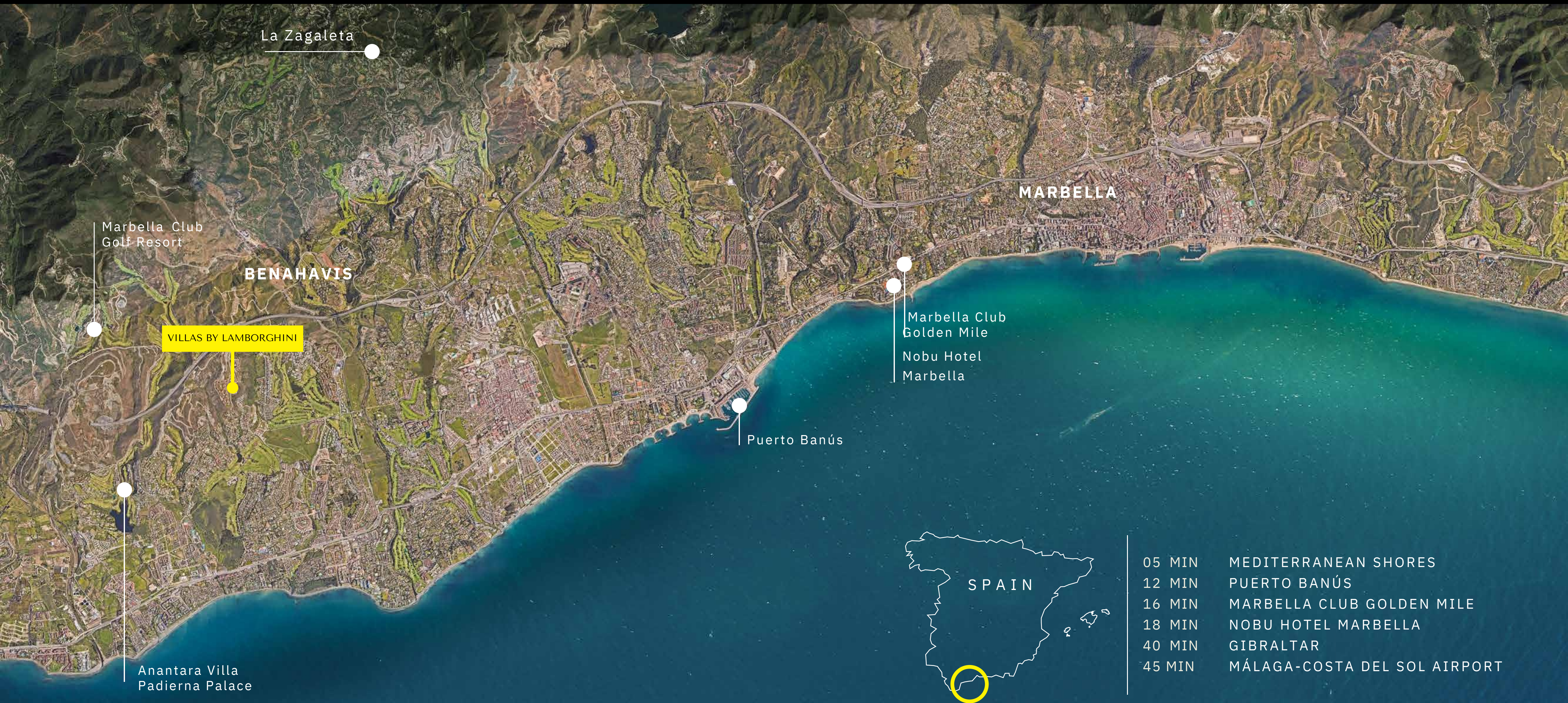




# COSTA DEL SOL



# SVOY



La Zagaleta

Marbella Club  
Golf Resort

**BENAHAVIS**

VILLAS BY LAMBORGHINI

**MARBELLA**

Marbella Club  
Golden Mile  
Nobu Hotel  
Marbella

Puerto Banús

Anantara Villa  
Padierna Palace



SPAIN

- 05 MIN MEDITERRANEAN SHORES
- 12 MIN PUERTO BANÚS
- 16 MIN MARBELLA CLUB GOLDEN MILE
- 18 MIN NOBU HOTEL MARBELLA
- 40 MIN GIBRALTAR
- 45 MIN MÁLAGA-COSTA DEL SOL AIRPORT



## PROMINENT POSITION

Tierra Viva is a luxury residential complex of 53 unique villas sitting gently on the side of a hill, with every villa standing on a different height.



SVOY







| SVOY

## MEDITERRANEAN IN THE EYES

The prestigious position of Tierra Viva overlooking the coastline, allows every villa to enjoy endless panoramas of the Mediterranean Sea.

A soothing vision for the soul.







SVOY

## A PLETHORA OF HIGH-END AMENITIES FEW MINUTES AWAY

Descending from Tierra Viva is Puerto Banús, where a luxurious offering of designer boutiques, sport cars parading, exclusive nightclubs, and fine dining experiences populate the picturesque waterfront.

VILLAS BY LAMBORGHINI



Aerial View of Puerto Banús, Marbella, Malaga, Spain





SVOY



Views of Marbella and the Costa Del Sol, as seen from the vantage point of Tierra Viva.





SVOY







SVOY







SVOY

# HIDDEN TREASURES

Sharp lines and finest materials are the unique traits of the luxury villas in Tierra Viva. As supernatural gems coming out of the land itself, they are named after the most precious stones.



DIAMANTE VILLAS  
(6-BEDROOMS)



ZAFIRO VILLAS  
(5-BEDROOMS)



ESMERALDA VILLAS  
(4-BEDROOMS)





SVOY



DIAMANTE VILLAS





SVOY

## DIAMANTE VILLAS

Majestic and superb, the Diamante Villas are spread on four levels, host 6 bedrooms and know no compromises.

Spacious roof terraces with breath-taking Mediterranean Views are the perfect set for family and social gatherings, while the extensive swimming pool and luxuriant gardens make this villas the perfect setting for an unforgettable holiday that can last for a lifetime.























SVOY



ZAFIRO VILLAS





SVOY

## ZAFIRO VILLAS

Refined, classy and sophisticated, the 4-level Zafiro Villas sit gently on the hillside, offering stunning views from every room, especially from the panoramic rooftop. With 5 bedrooms and plenty of common spaces, they feature a wine cellar, a multipurpose room that can easily become a gym and a massive pool area for unforgettable memories.









## / ZAFIRO VILLAS

Iconic, grand, full of light. Inside the Zafiro Villas everything is sophisticated. Tailor-made finishings and high-end materials enhance the generous open-spaces, for a sublime living experience.





/ ZAFIRO VILLAS



| SVOY





/ ZAFIRO VILLAS



| SVOY







SVOY



ESMERALDA VILLAS





SVOY

## ESMERALDA VILLAS

Every day is a summer day in the Esmeralda Villas, the 4-bedroom residences with glorious terraced gardens and exclusive pool areas.

Here, everything was created to offer the most relaxing and unwinding experience, like the steam & sauna rooms and the home theatre in the basement floor.





/ ESMERALDA VILLAS



| SVOY





/ ESMERALDA VILLAS



| SVOY













/ ESMERALDA VILLAS



| SVOY



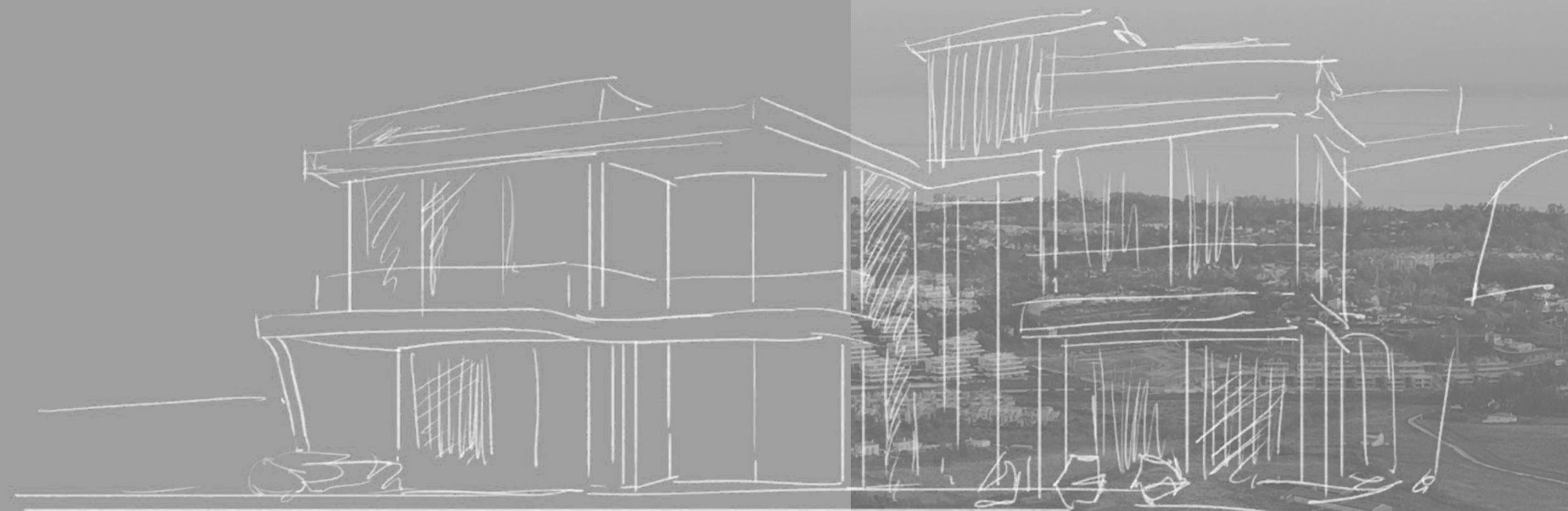








SVOY



## FEATURES, SPECIFICATIONS & FLOOR PLANS

### DISCLAIMER

All pictures, plans, layouts, information, data and details included in this brochure are indicative only and may change at any time up to the final 'as built' status in accordance with final designs of the project, regulatory approvals and planning permissions. All accessories and interior finishes such as wallpaper, chandeliers, furniture, electronics, white goods, curtains, hard and soft landscaping, pavements, features, gym, and other elements displayed in the brochure, or between the plot boundary, are not part of the unit and are shown for illustrative purposes only.





SVOY

## AN EXCLUSIVE COMMUNITY WITH 24/7 PREMIUM SECURITY

/ Located within the gated community of Los Jaralillos - Benahavís, Tierra Viva prides itself on providing a private and secure environment for its residents with premium 24/7 security services.







| SVOY



## PERSONAL PARADISE

/ Each villa within Tierra Viva comes with its own private pool, offering a chance to create a personal oasis for serene moments and unforgettable memories.







SVOY



GOLF VIEWS

# TIERRA VIVA MASTERPLAN

 DIAMANTE VILLAS  
6-bedrooms

 ZAFIRO VILLAS  
5-bedrooms

 ESMERALDA VILLAS  
4-bedrooms

SEA VIEWS 







# SPECIFICATIONS

All villas come with a reinforced concrete structure. External walls are made of double layer engineered bricks and thermal insulation. The villas have double glazed windows, cooling and heating system, leveled and graded outdoor spaces, concrete pavers on driveway and parking.

Each villa features an exquisite pool and crafted hardscape.

Note: The villas are not furnished nor softscaping is provided.

## VILLA

### INTERNAL CLADDING

- Vertical and horizontal finishes with premium quality emulsion paint, colour to be defined for walls and ceilings.
- Suspended ceiling in gypsum for the dry areas and waterproof plasterboard for the wet areas.

### EXTERNAL CLADDING

- Waterproof render with emulsion paint from top quality brand. Colour to be defined.
- Stone cladding from first quality for external walls, where applicable.

### FLOORING AND TILING

- Marble first quality, in big format for kitchen, living, dining, hall and common areas of the ground floor.
- Porcelain floor tiling, in big format, from top brand such as COSENTINO, PORCELANOSA, PERONDA, INALCO or similar for bathrooms, wet rooms, bedrooms and service areas.
- For external areas, same tiling in anti-slip version will be provided.

## BATHROOMS

### FLOORING AND TILING

- Porcelain floor tiling, in big format, from top brand such as COSENTINO, PORCELANOSA, PERONDA, INALCO or similar for bathrooms, wet rooms, bedrooms and service areas.
- Porcelain tiling in big format, from top brand such as COSENTINO, PORCELANOSA, PERONDA, INALCO, or similar, in marble effect look finish.

### SANITARY WARE, FAUCETS AND ACCESSORIES

- Suspended built-in toilet, from GEBERIT, KOHLER or similar brand, with soft-closing system.
- Countertop in “Solid Surface” for secondary bathrooms and porcelain for main bathroom, from DURAVIT, COSENTINO, INALCO or similar. In master bathroom, double basin with wooden lacquered cabinet, colour to be defined.
- Basins from DURAVIT, KOHLER, or similar brand.
- Shower tray from top quality brand such as COSENTINO, PORCELANOSA, KOHLER or similar brand.
- Single lever mixer for wash hand basin from HANS GROHE AXOR, GESSI, KOHLER or similar brand.
  - Thermostatic mixer for shower with built-in over head rain shower from HANS GROHE AXOR, GESSI, or similar brand.
- Mirror with LED back light and anti-fog system, for bathrooms.
- Security glass shower screen.





# SPECIFICATIONS

## KITCHEN

### CABINETS AND WORKTOPS

- Main kitchen branded by top supplier such as GUNNI&TRENTINO, BULTHAUP or similar, with worktop and back splash made of rather than by porcelain surface from COSENTINO, PORCELANOSA, INALCO, or similar brand.
- Service kitchen with top quality wooden cabinets, with high capacity, colour to be confirmed, with SILESTONE by COSENTINO or similar brand worktop.

### APPLIANCES

- Appliances from MIELE, GAGGENAU or similar brand for main kitchen.
- Appliances from SIEMENS, BOSCH or similar brand for service kitchen.
  - Main and service kitchen fully fitted with fridge, freezer, hob, oven, dishwasher and built-in extractor.

## SPA & STEAM ROOM

### FLOORING AND TILING

- Porcelain floor tiling, with marble look, in big format, from top brand such as COSENTINO, MARAZZI, PORCELANOSA, PERONDA, INALCO, or similar brand.
- Porcelain tiling in big format with marble look, from top brand such as COSENTINO, MARAZZI, PORCELANOSA, PERONDA, INALCO, or similar brand.

## LAUNDRY

### CABINETS AND WORKTOPS

- Laundry branded by top suppliers such as GUNNI&TRENTINO, BULTHAUP or similar brand.
- Silestone worktop from COSENTINO or similar brand.

### APPLIANCES

- Appliances from SIEMENS, BOSCH or similar brand for laundry.
  - Fitted laundry with washing machine and tumble dryer.

## INTERNAL CARPENTRY

- Security main entrance door veneered in wood with pivot system.
- Interior doors and wardrobe fronts finished in wood, with hidden hinges.
- Interior of wardrobes fully fitted according to project specifications.

## EXTERNAL CARPENTRY

- Top quality brand aluminum profile system, from CORTIZO, TECHNAL or similar brand, colour to be defined, with thermal bridge break.
- Security double CLIMALITE glazing, with thermal and sun protection according to the orientation.

## FACILITIES

### AIR CONDITIONING AND HEATING

- Individual air conditioning system (heating & cooling) for every room, from top supplier such LG, DAIKING or similar brand.
  - Underfloor heating in ground floor and first floor, electrical for bathrooms and water system for the rest of the rooms.

### ELECTRICITY & TELECOMMUNICATION & HOME AUTOMATION

- Top quality mechanisms from NIESEN, GIRA, or similar brand.
  - LED lighting with intensity regulation (dimmable) for living, kitchen and bedrooms.
- Sockets with USB charger in bedrooms and kitchen.
- House domotic control for:
  - Heat&Cool system
  - Lighting system
  - Gates

**Disclaimer:** All pictures, plans, layouts, information, data and details included in this brochure are indicative only and may change at any time up to the final 'as built' status in accordance with final designs of the project, regulatory approvals and planning permissions. All accessories and interior finishes such as wallpaper, chandeliers, furniture, electronics, white goods, curtains, hard and soft landscaping, pavements, features, gym, and other elements displayed in the brochure, or between the plot boundary, are not part of the unit and are shown for illustrative purposes only.





SVOY

# DIAMANTE VILLAS

6 - B E D

SQM 1,254 - 1,450

SQFT 13,498 - 15,608

**Disclaimer:** All pictures, plans, layouts, information, data and details included in this brochure are indicative only and may change at any time up to the final 'as built' status in accordance with final designs of the project, regulatory approvals and planning permissions. All accessories and interior finishes such as wallpaper, chandeliers, furniture, electronics, white goods, curtains, hard and soft landscaping, pavements, features, gym, and other elements displayed in the brochure, or between the plot boundary, are not part of the unit and are shown for illustrative purposes only.

PLOT SIZE / SQM 2,476 - 2,881

SQFT 26,651 - 31,011

Including total indoor & outdoor built up area.



GOLF VIEWS

SEA VIEWS





SVOY

# DIAMANTE VILLAS

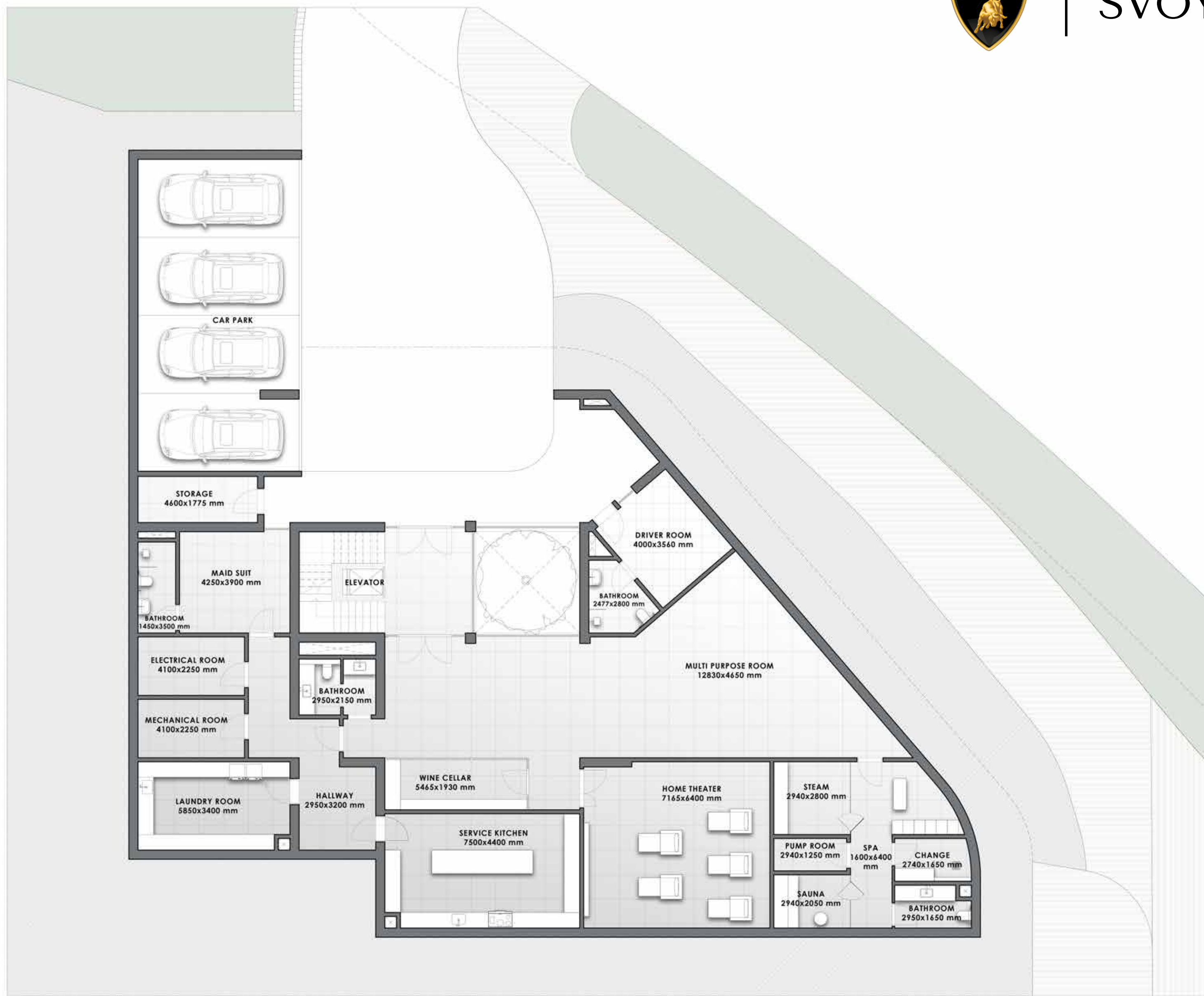
<b>6 - B E D</b>	<b>SQM</b> 1,254 - 1,450
	<b>SQFT</b> 13,498 - 15,608
<b>PLOT SIZE</b>	
SQM 2,476 - 2,881	
SQFT 26,651 - 31,011	

Including total indoor & outdoor built up area.



BASEMENT

**Disclaimer:** All pictures, plans, layouts, information, data and details included in this brochure are indicative only and may change at any time up to the final 'as built' status in accordance with final designs of the project, regulatory approvals and planning permissions. All accessories and interior finishes such as wallpaper, chandeliers, furniture, electronics, white goods, curtains, hard and soft landscaping, pavements, features, gym, and other elements displayed in the brochure, or between the plot boundary, are not part of the unit and are shown for illustrative purposes only.







SVOY

# DIAMANTE VILLAS

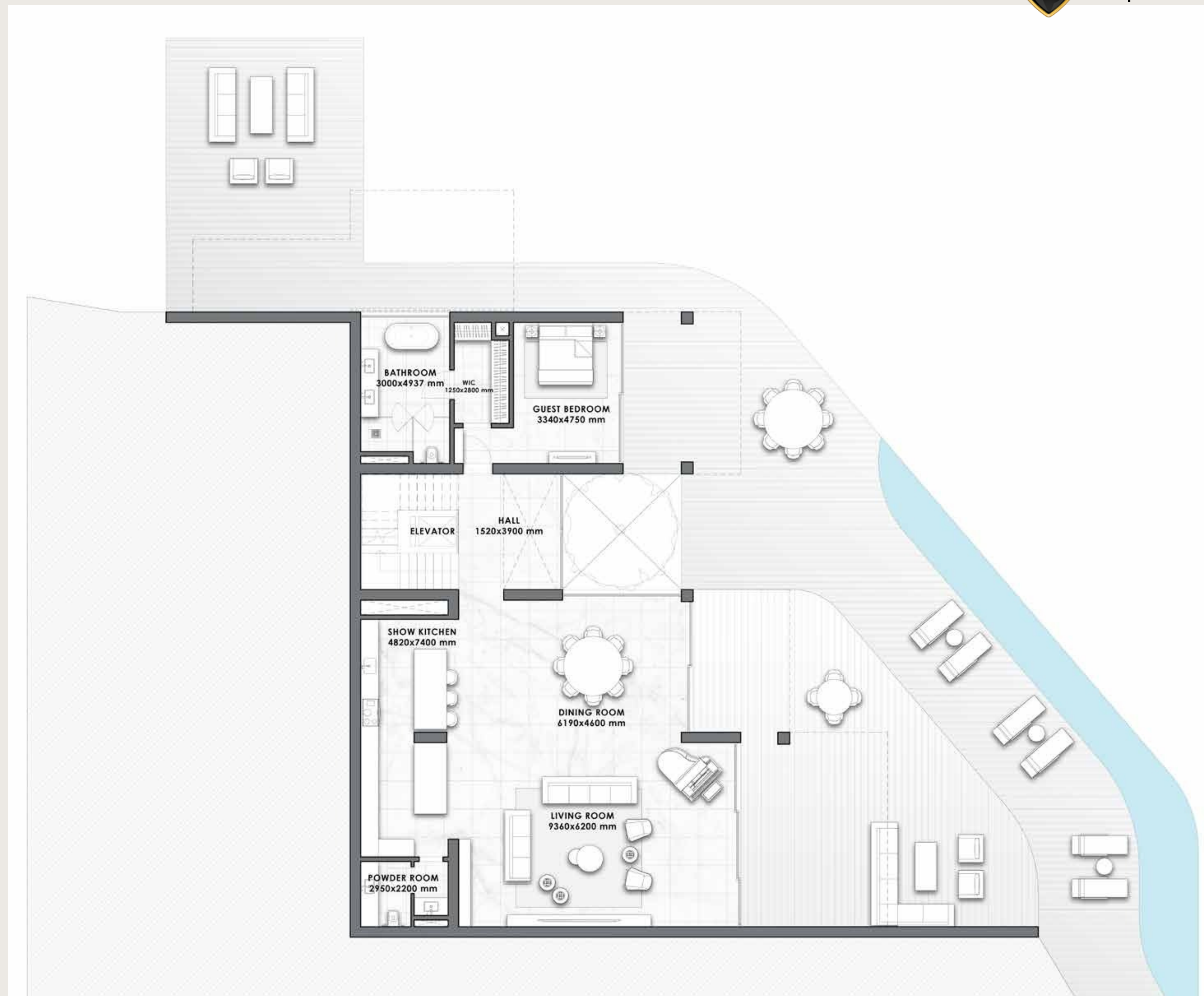
<b>6 - B E D</b>	<b>SQM</b>	1,254 - 1,450
	<b>SQFT</b>	13,498 - 15,608
<b>PLOT SIZE</b>		
		SQM 2,476 - 2,881
		SQFT 26,651 - 31,011

Including total indoor & outdoor built up area.



GROUND FLOOR

**Disclaimer:** All pictures, plans, layouts, information, data and details included in this brochure are indicative only and may change at any time up to the final 'as built' status in accordance with final designs of the project, regulatory approvals and planning permissions. All accessories and interior finishes such as wallpaper, chandeliers, furniture, electronics, white goods, curtains, hard and soft landscaping, pavements, features, gym, and other elements displayed in the brochure, or between the plot boundary, are not part of the unit and are shown for illustrative purposes only.







SVOY

# DIAMANTE VILLAS

<b>6 - B E D</b>	<b>SQM</b> 1,254 - 1,450
	<b>SQFT</b> 13,498 - 15,608
<b>PLOT SIZE</b>	
SQM 2,476 - 2,881	
SQFT 26,651 - 31,011	

Including total indoor & outdoor built up area.



FIRST FLOOR

**Disclaimer:** All pictures, plans, layouts, information, data and details included in this brochure are indicative only and may change at any time up to the final 'as built' status in accordance with final designs of the project, regulatory approvals and planning permissions. All accessories and interior finishes such as wallpaper, chandeliers, furniture, electronics, white goods, curtains, hard and soft landscaping, pavements, features, gym, and other elements displayed in the brochure, or between the plot boundary, are not part of the unit and are shown for illustrative purposes only.







SVOY

# DIAMANTE VILLAS

<b>6 - B E D</b>	<b>SQM</b> 1,254 - 1,450
	<b>SQFT</b> 13,498 - 15,608
<b>PLOT SIZE</b>	
SQM 2,476 - 2,881	
SQFT 26,651 - 31,011	

*Including total indoor & outdoor built up area.*



ROOFTOP  
TERRACE

**Disclaimer:** All pictures, plans, layouts, information, data and details included in this brochure are indicative only and may change at any time up to the final 'as built' status in accordance with final designs of the project, regulatory approvals and planning permissions. All accessories and interior finishes such as wallpaper, chandeliers, furniture, electronics, white goods, curtains, hard and soft landscaping, pavements, features, gym, and other elements displayed in the brochure, or between the plot boundary, are not part of the unit and are shown for illustrative purposes only.







SVOY

# ZAFIRO VILLAS

## 5 - BED

**SQM** 863 - 1,034

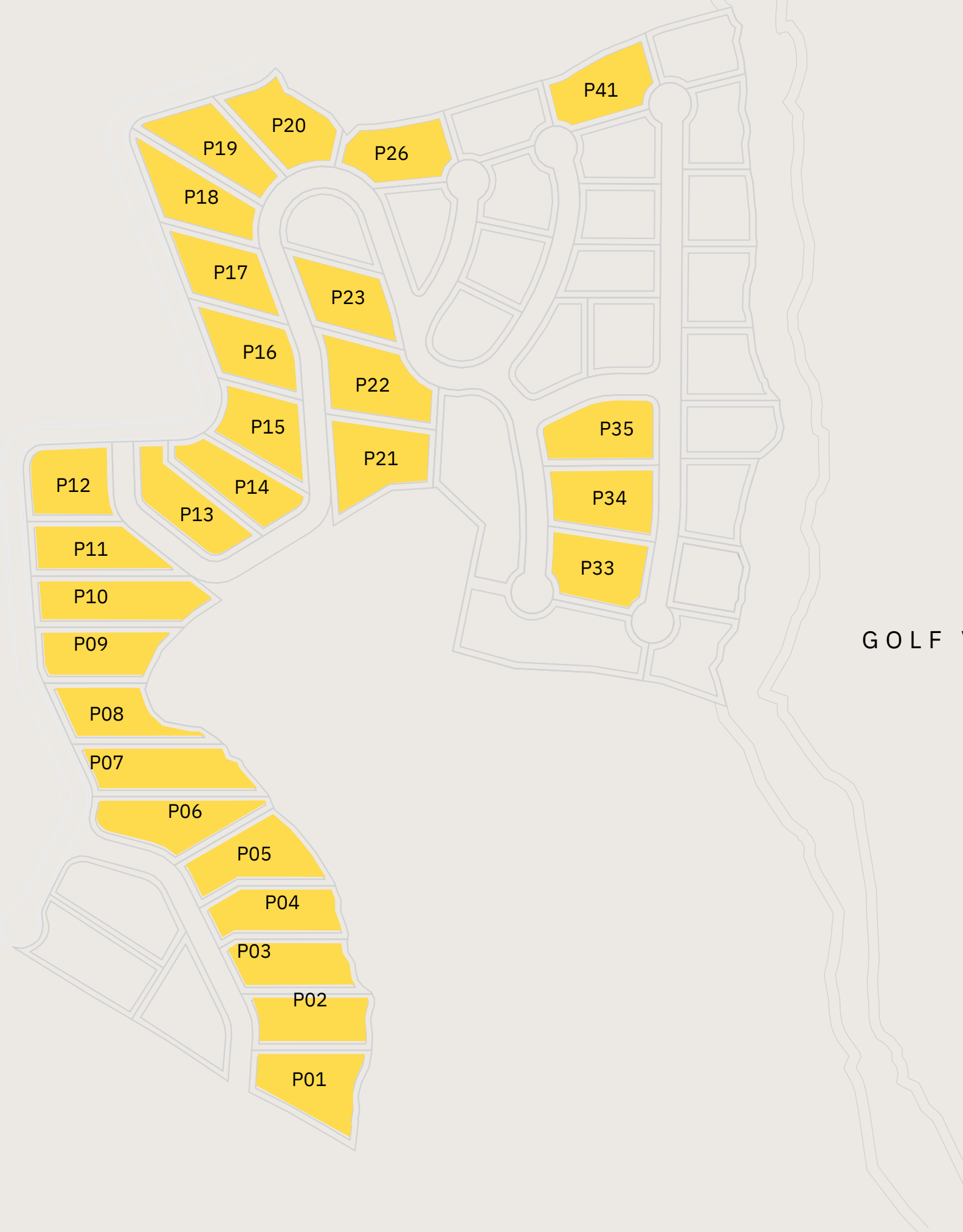
**SQFT** 9,289 - 11,130

**Disclaimer:** All pictures, plans, layouts, information, data and details included in this brochure are indicative only and may change at any time up to the final 'as built' status in accordance with final designs of the project, regulatory approvals and planning permissions. All accessories and interior finishes such as wallpaper, chandeliers, furniture, electronics, white goods, curtains, hard and soft landscaping, pavements, features, gym, and other elements displayed in the brochure, or between the plot boundary, are not part of the unit and are shown for illustrative purposes only.

**PLOT SIZE** / **SQM** 1,389 - 1,874

**SQFT** 14,951 - 20,172

Including total indoor & outdoor built up area.



GOLF VIEWS

SEA VIEWS





SVOY

# ZAFIRO VILLAS

## 5 - BED

**SQM**

863 - 1,034

**SQFT**

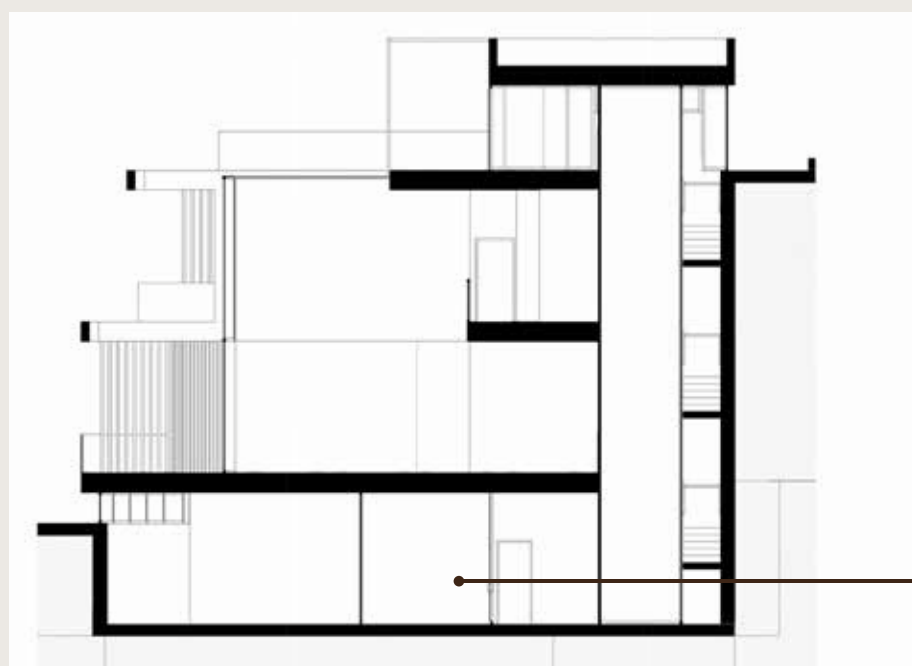
9,289 - 11,130

**PLOT SIZE**

SQM 1,389 - 1,874

SQFT 14,951 - 20,172

*Including total indoor & outdoor built up area.*



BASEMENT

**Disclaimer:** All pictures, plans, layouts, information, data and details included in this brochure are indicative only and may change at any time up to the final 'as built' status in accordance with final designs of the project, regulatory approvals and planning permissions. All accessories and interior finishes such as wallpaper, chandeliers, furniture, electronics, white goods, curtains, hard and soft landscaping, pavements, features, gym, and other elements displayed in the brochure, or between the plot boundary, are not part of the unit and are shown for illustrative purposes only.





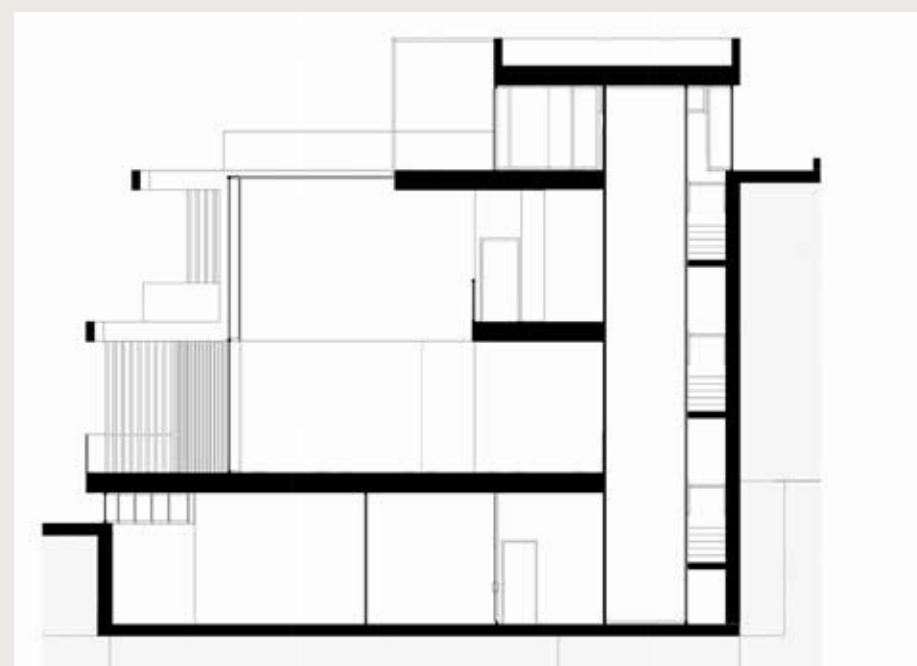


SVOY

# ZAFIRO VILLAS

<b>5 - BED</b>	<b>SQM</b> 863 - 1,034
	<b>SQFT</b> 9,289 - 11,130
<b>PLOT SIZE</b>	
SQM 1,389 - 1,874	
SQFT 14,951 - 20,172	

Including total indoor & outdoor built up area.



GROUND FLOOR

**Disclaimer:** All pictures, plans, layouts, information, data and details included in this brochure are indicative only and may change at any time up to the final 'as built' status in accordance with final designs of the project, regulatory approvals and planning permissions. All accessories and interior finishes such as wallpaper, chandeliers, furniture, electronics, white goods, curtains, hard and soft landscaping, pavements, features, gym, and other elements displayed in the brochure, or between the plot boundary, are not part of the unit and are shown for illustrative purposes only.







SVOY

# ZAFIRO VILLAS

5 - B E D

**SQM**  
863 - 1,034

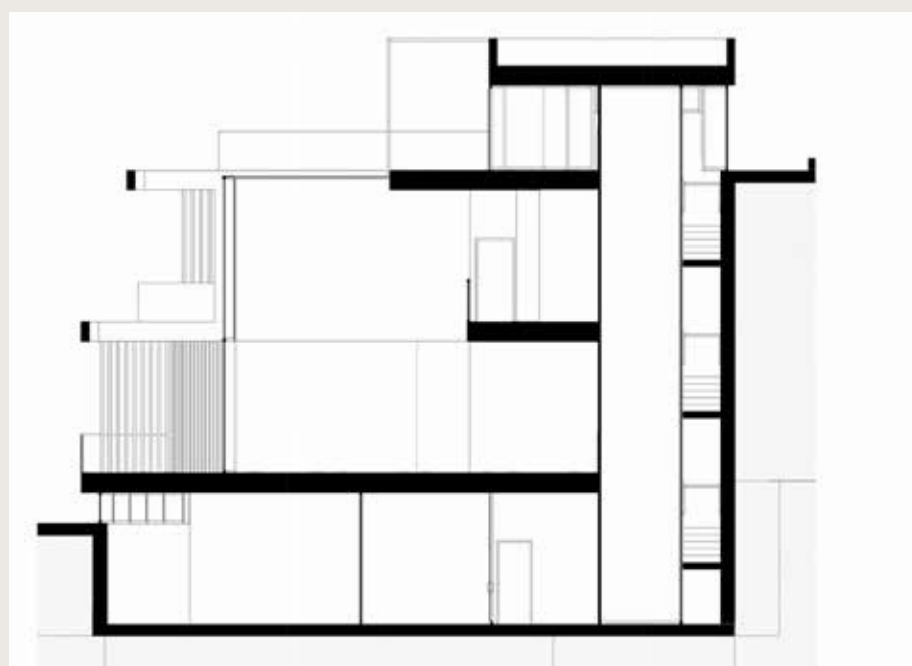
**SQFT**  
9,289 - 11,130

**PLOT SIZE**

SQM 1,389 - 1,874

SQFT 14,951 - 20,172

*Including total indoor & outdoor built up area.*



FIRST FLOOR



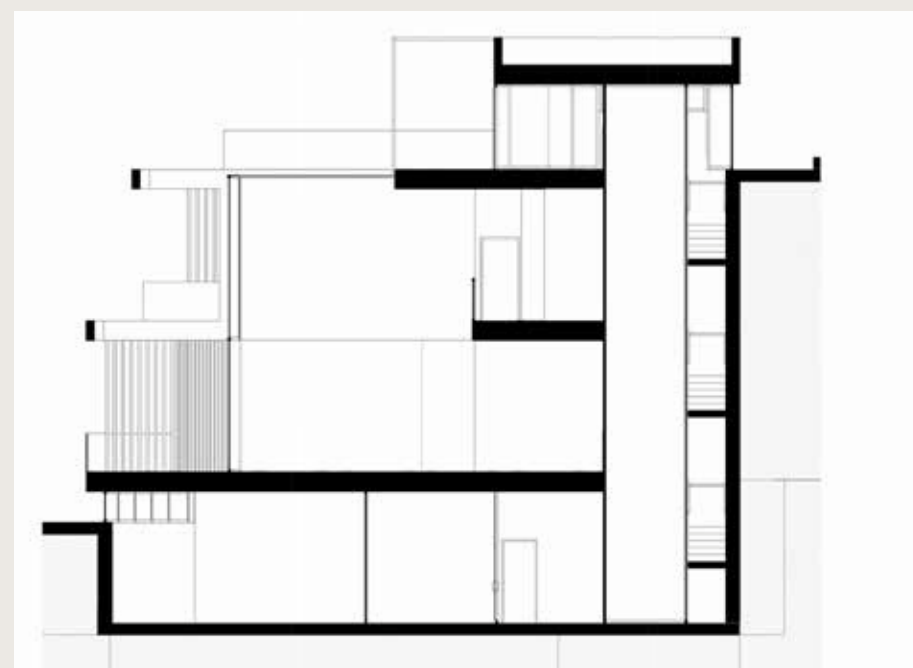
**Disclaimer:** All pictures, plans, layouts, information, data and details included in this brochure are indicative only and may change at any time up to the final 'as built' status in accordance with final designs of the project, regulatory approvals and planning permissions. All accessories and interior finishes such as wallpaper, chandeliers, furniture, electronics, white goods, curtains, hard and soft landscaping, pavements, features, gym, and other elements displayed in the brochure, or between the plot boundary, are not part of the unit and are shown for illustrative purposes only.



# ZAFIRO VILLAS

<b>5 - B E D</b>	<b>SQM</b> 863 - 1,034
	<b>SQFT</b> 9,289 - 11,130
<b>PLOT SIZE</b>	
SQM 1,389 - 1,874	
SQFT 14,951 - 20,172	

*Including total indoor & outdoor built up area.*

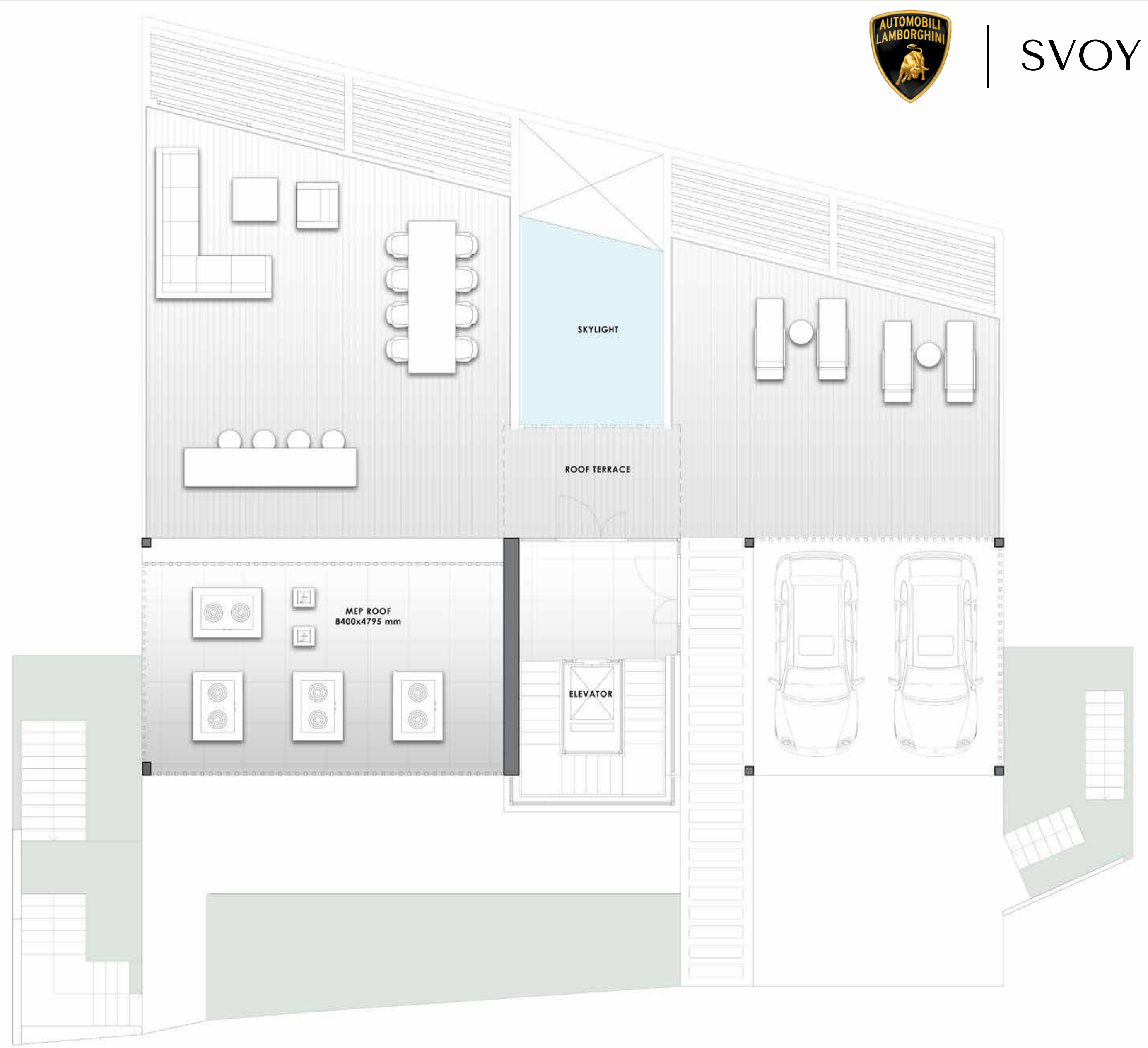


ROOFTOP  
TERRACE

**Disclaimer:** All pictures, plans, layouts, information, data and details included in this brochure are indicative only and may change at any time up to the final 'as built' status in accordance with final designs of the project, regulatory approvals and planning permissions. All accessories and interior finishes such as wallpaper, chandeliers, furniture, electronics, white goods, curtains, hard and soft landscaping, pavements, features, gym, and other elements displayed in the brochure, or between the plot boundary, are not part of the unit and are shown for illustrative purposes only.



SVOY







SVOY

# ESMERALDA VILLAS

## 4 - BED

**SQM** 680 - 822

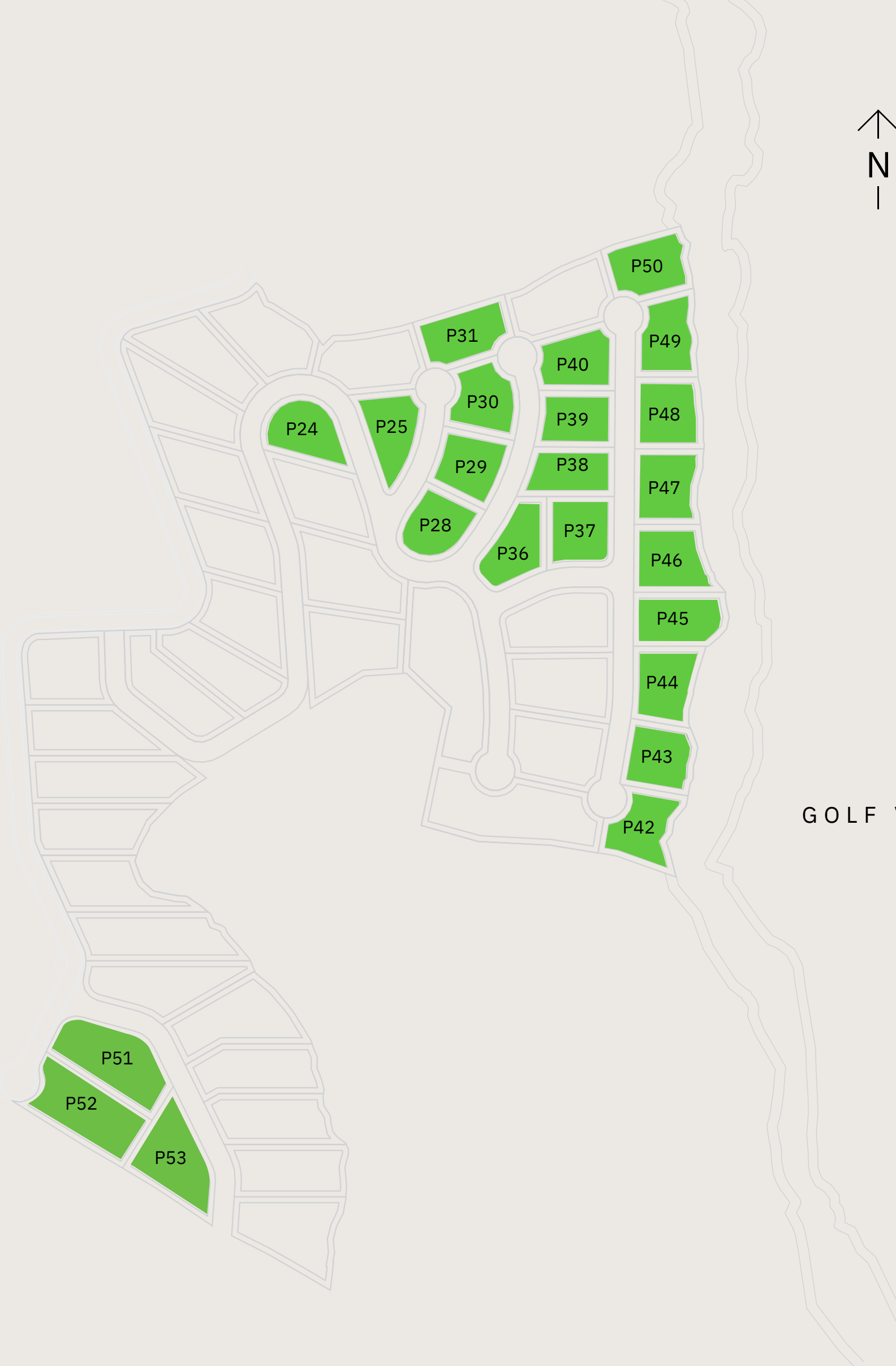
**SQFT** 7,320 - 8,848

**Disclaimer:** All pictures, plans, layouts, information, data and details included in this brochure are indicative only and may change at any time up to the final 'as built' status in accordance with final designs of the project, regulatory approvals and planning permissions. All accessories and interior finishes such as wallpaper, chandeliers, furniture, electronics, white goods, curtains, hard and soft landscaping, pavements, features, gym, and other elements displayed in the brochure, or between the plot boundary, are not part of the unit and are shown for illustrative purposes only.

**PLOT SIZE** / **SQM** 1,005 - 1,669

**SQFT** 10,818 - 17,965

*Including total indoor & outdoor built up area.*



GOLF VIEWS

SEA VIEWS



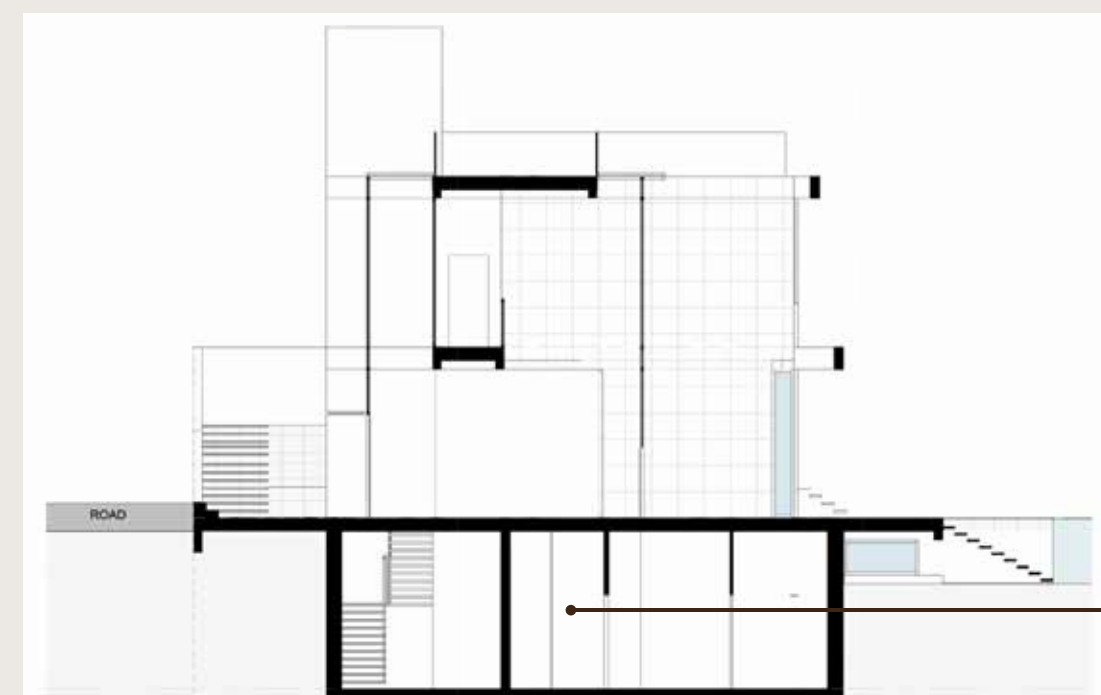


SVOY

# ESMERALDA VILLAS

<b>4 - BED</b>	<b>SQM</b> 680 - 822
	<b>SQFT</b> 7,320 - 8,848
<b>PLOT SIZE</b>	
SQM 1,005 - 1,669	
SQFT 10,818 - 17,965	

Including total indoor & outdoor built up area.



BASEMENT

**Disclaimer:** All pictures, plans, layouts, information, data and details included in this brochure are indicative only and may change at any time up to the final 'as built' status in accordance with final designs of the project, regulatory approvals and planning permissions. All accessories and interior finishes such as wallpaper, chandeliers, furniture, electronics, white goods, curtains, hard and soft landscaping, pavements, features, gym, and other elements displayed in the brochure, or between the plot boundary, are not part of the unit and are shown for illustrative purposes only.







SVOY

# ESMERALDA VILLAS

SQM  
680 - 822  
4 - BED  
SQFT

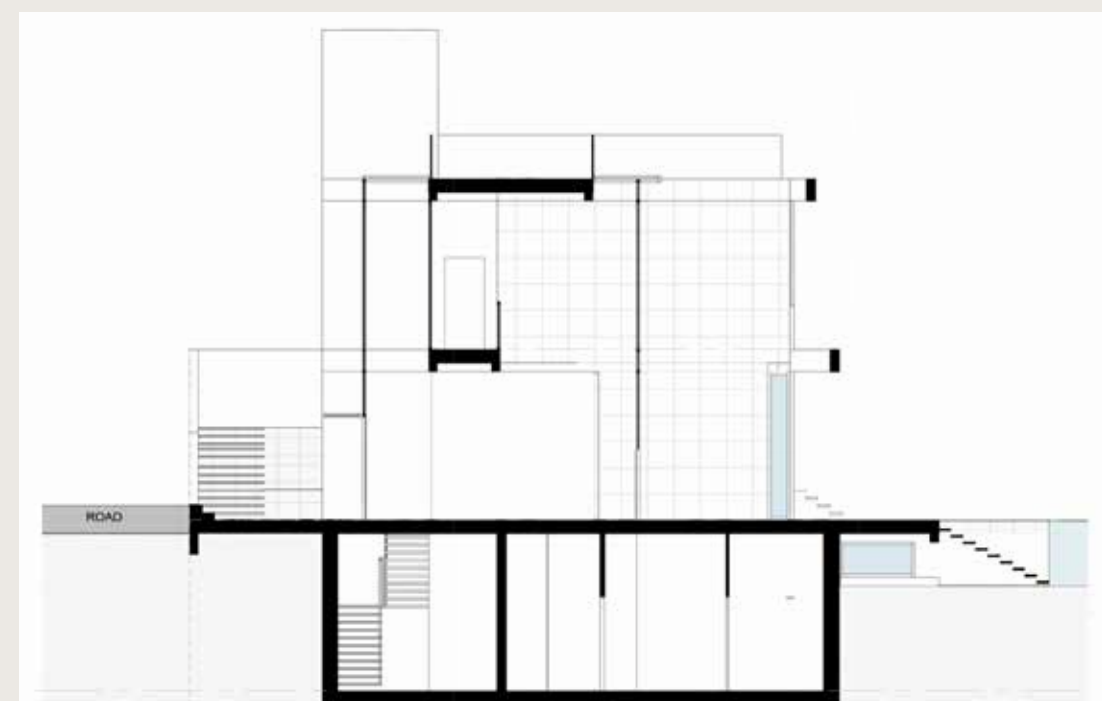
7,320 - 8,848

## PLOT SIZE

SQM 1,005 - 1,669

SQFT 10,818 - 17,965

Including total indoor & outdoor built up area.



GROUND  
FLOOR



**Disclaimer:** All pictures, plans, layouts, information, data and details included in this brochure are indicative only and may change at any time up to the final 'as built' status in accordance with final designs of the project, regulatory approvals and planning permissions. All accessories and interior finishes such as wallpaper, chandeliers, furniture, electronics, white goods, curtains, hard and soft landscaping, pavements, features, gym, and other elements displayed in the brochure, or between the plot boundary, are not part of the unit and are shown for illustrative purposes only.



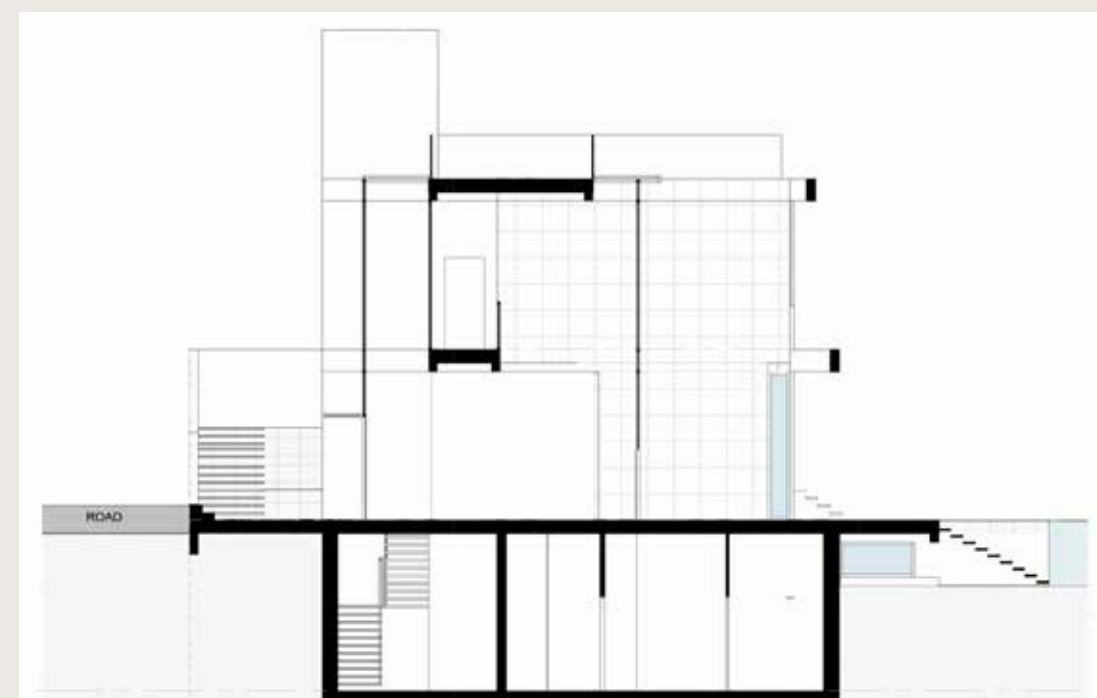


SVOY

# ESMERALDA VILLAS

<b>4 - BED</b>	<b>SQM</b> 680 - 822
	<b>SQFT</b> 7,320 - 8,848
<b>PLOT SIZE</b>	
SQM 1,005 - 1,669	
SQFT 10,818 - 17,965	

Including total indoor & outdoor built up area.



FIRST  
FLOOR



**Disclaimer:** All pictures, plans, layouts, information, data and details included in this brochure are indicative only and may change at any time up to the final 'as built' status in accordance with final designs of the project, regulatory approvals and planning permissions. All accessories and interior finishes such as wallpaper, chandeliers, furniture, electronics, white goods, curtains, hard and soft landscaping, pavements, features, gym, and other elements displayed in the brochure, or between the plot boundary, are not part of the unit and are shown for illustrative purposes only.



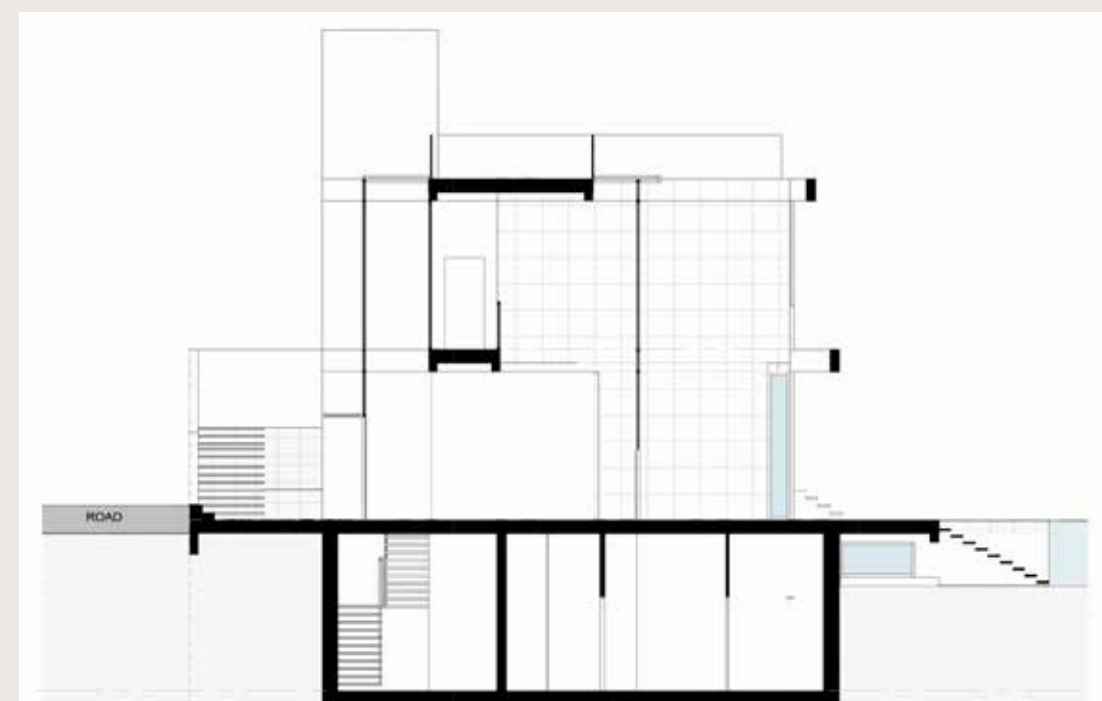


SVOY

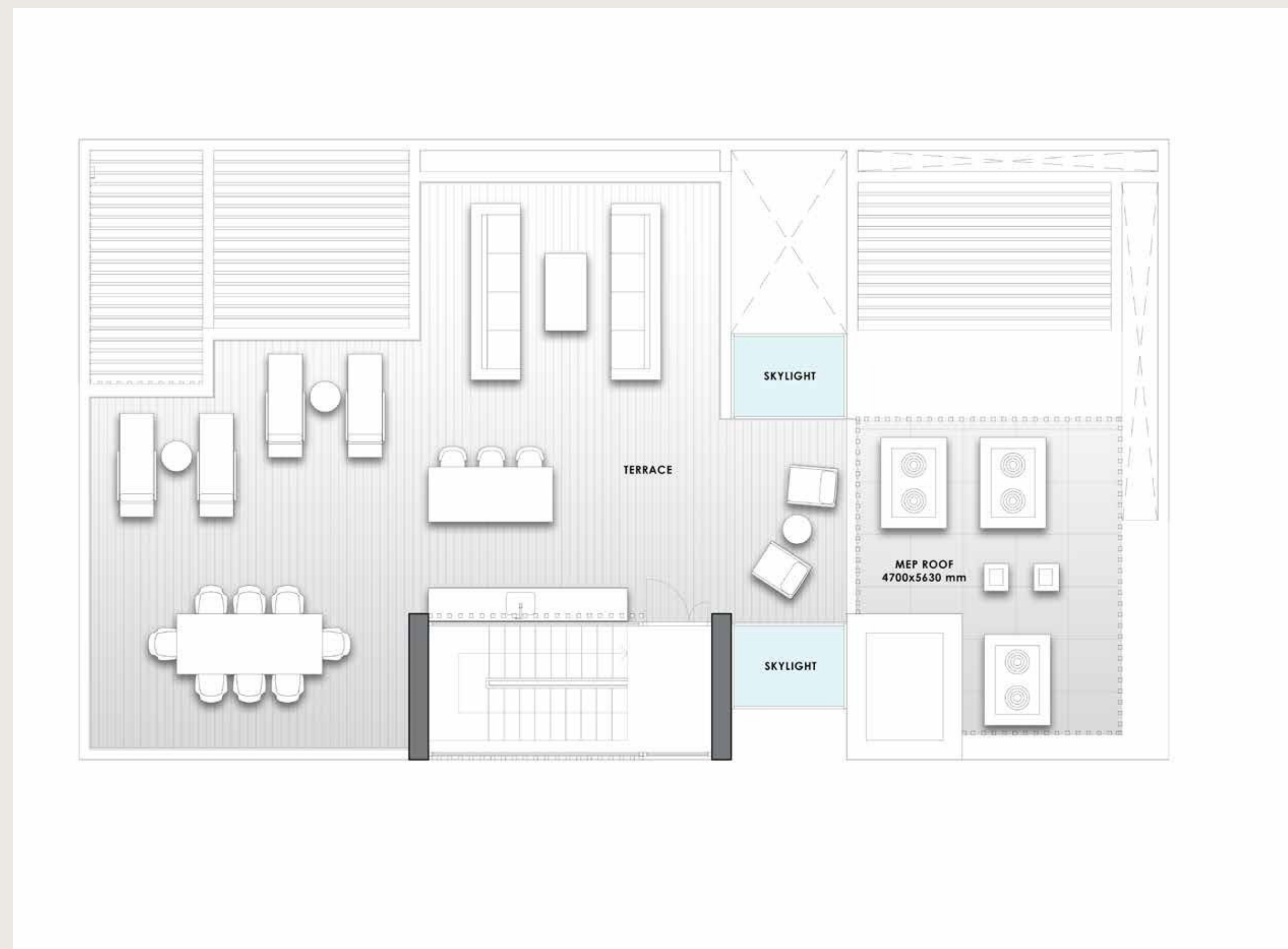
# ESMERALDA VILLAS

<b>4 - B E D</b>	<b>SQM</b> 680 - 822
	<b>SQFT</b> 7,320 - 8,848
<b>PLOT SIZE</b>	
SQM 1,005 - 1,669	
SQFT 10,818 - 17,965	

Including total indoor & outdoor built up area.



ROOFTOP  
TERRACE



**Disclaimer:** All pictures, plans, layouts, information, data and details included in this brochure are indicative only and may change at any time up to the final 'as built' status in accordance with final designs of the project, regulatory approvals and planning permissions. All accessories and interior finishes such as wallpaper, chandeliers, furniture, electronics, white goods, curtains, hard and soft landscaping, pavements, features, gym, and other elements displayed in the brochure, or between the plot boundary, are not part of the unit and are shown for illustrative purposes only.